

| PARKING TABULATION                                |   |                                   |
|---|---|-----------------------------------|
| PARKING ALLOCATION FOR THE CONDITIONAL USE PERMIT |   |                                   |
| FUNCTION OF SPACE                                 | AREA/PARKING RATIO                          | NUMBER OF PARKING SPACES REQUIRED |
| PLACE OF WORSHIP SUITE #90 &100                   | 2,286.23 S.F. / 1:50 S.F.                   | 43 SPACES                         |
| PLACE OF WORSHIP SUITE #90 & 100 CLASSROOM        | 9 CLASSROOMS (1 SPACE PER CLASSROOM)        | 9 SPACES                          |
| REQUIRED SPACES                                   | PROVIDED EXISTING SPACES                    |                                   |
| 52 SPACES   | 217 SPACES (INCLUDING 12 ACCESSIBLE SPACES) |                                   |
| USE ZONE DESCRIPTION                              |   |                                   |
| COMMUNITY COMMERCIAL (CC)                         |   |                                   |

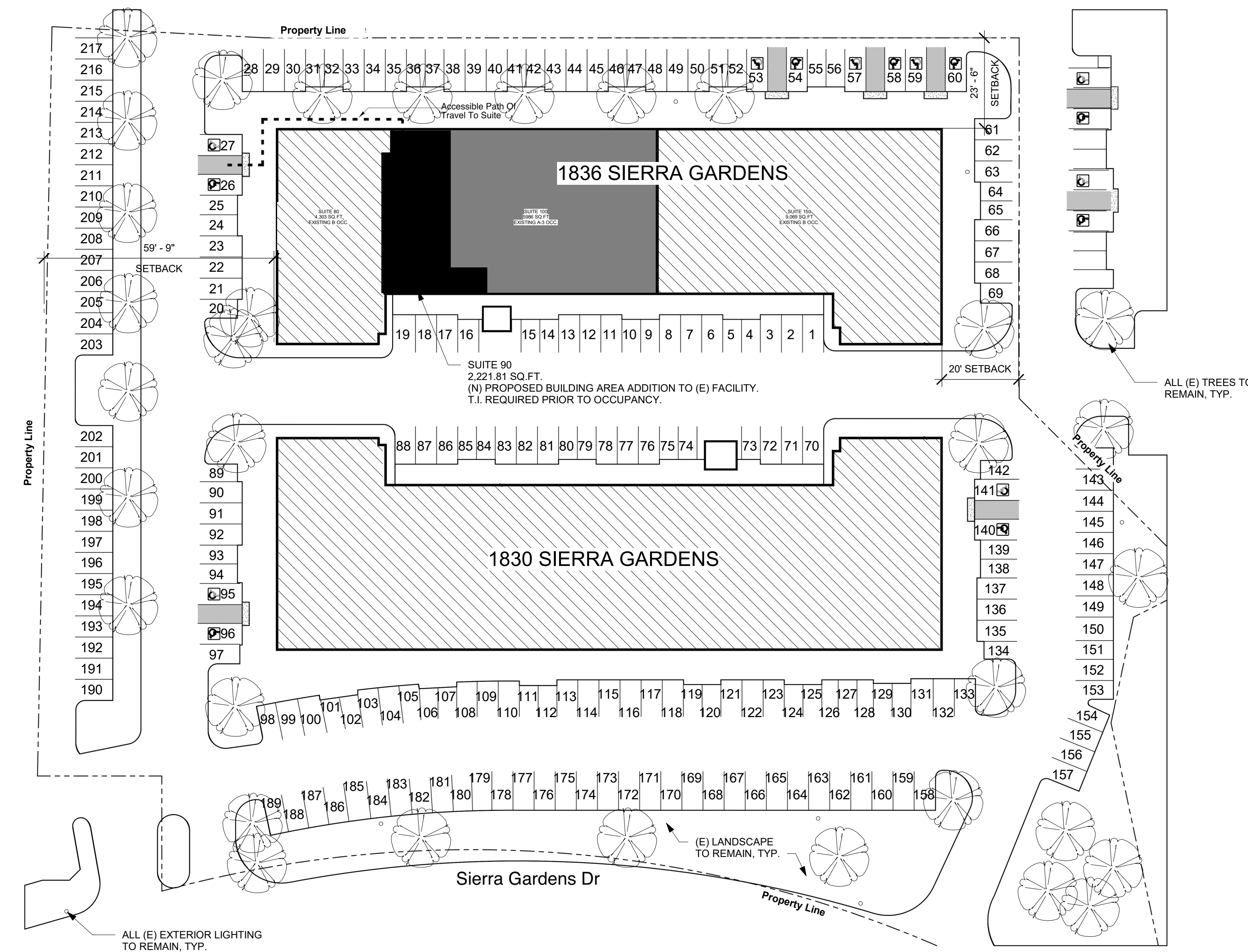
**BUILDING AREA ANALYSIS – SEPARATED MIXED OCCUPANCY BUILDING**

**ACTUAL AREAS:**  
 A-3 (SUITES 90+100): 8,207 SF  
 B (SUITE 80): 4,303 SF  
 B (SUITE 150): 9,069 SF

**ALLOWABLE AREAS (TABLE 506.2, TYPE V-B, SPRINKLERED):**  
 A-3 = 24,000 SF  
 B = 36,000 SF

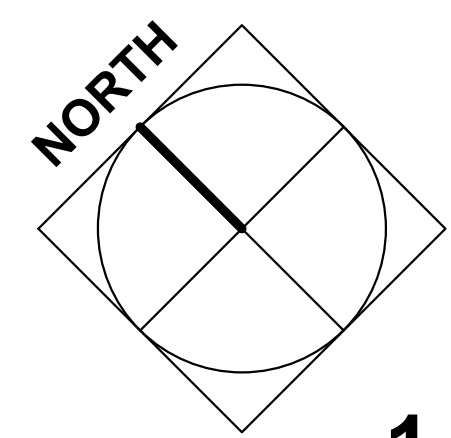
**CALCULATION:**  
 A-3 (STE 90+100) = 8,207 / 24,000 = 0.342  
 B (STE 80) = 4,303 / 36,000 = 0.120  
 B (STE 150) = 9,069 / 36,000 = 0.252  
 SUM = 0.342 + 0.120 + 0.252 = 0.713 ≤ 1.00 → COMPLIES

**CONCLUSION: THE EXPANSION OF THE ASSEMBLY OCCUPANCY COMPLIES WITH CBC §§506 & 508.4.2.**



**SITE LEGEND**

- HATCH INDICATES (E) BUILDING AREA OUT OF SCOPE
- HATCH INDICATES (E) BUILDING AREA UNDER PREVIOUSLY APPROVED CUP
- HATCH INDICATES (N) PROPOSED BUILDING AREA ADDITION TO (E) FACILITY



**1 SITE PLAN**  
SCALE: 1" = 20'-0"

Preliminary Design For:  
**ISMAILI CENTER**  
 1836 SIERRA GARDENS DR, STE 90  
 ROSEVILLE, CA 95661

VVM / NS 2024227 08/26/2025



**OCCUPANCY ANALYSIS BY INDIVIDUAL SPACE**

| ROOM # | ROOM NAME   | OCC. TYPE | FUNCTION OF SPACE PER CBC TABLE 1004.1.1   | AREA     | FLOOR AREA (SQ. FT.) PER OCCUPANT PER CBC TABLE 1004.5 | CALC. OCC. LOAD |
|--------|-------------|-----------|--|----------|--|-----------------|
| 01     | LOBBY       | A-3       | ASSEMBLY W/O FIXED SEATING- STANDING SPACE | 571 SF   | 15 NET   | 39              |
| 02     | STORAGE     | S-1       | ACCESSORY STORAGE                          | 202 SF   | 300 GROSS  | 1               |
| 03     | VESTIBULE   | A-3*      | ASSEMBLY W/O FIXED SEATING- STANDING SPACE | 90 SF    | 15 NET   | 6               |
| 04     | PANTRY      | S-1       | ACCESSORY STORAGE                          | 171 SF   | 300 GROSS  | 1               |
| 05     | MK OFFICE   | B         | BUSINESS                                   | 119 SF   | 150 GROSS  | 1               |
| 06     | PRAYER HALL | A-3       | ASSEMBLY W/O FIXED SEATING- CONCENTRATED   | 1,565 SF | 7 NET  | 224             |
| 07     | HALL        | -         | CIRCULATION                                | 496 SF   | -  | -               |
| 08     | CLASS 1     | A-3*      | CLASSROOM                                  | 84 SF    | 20 NET   | 5               |
| 09     | CLASS 2     | A-3*      | CLASSROOM                                  | 82 SF    | 20 NET   | 5               |
| 10     | RR          | -         | ACCESSORY                                  | 173 SF   | -  | -               |
| 11     | RR          | -         | ACCESSORY                                  | 122 SF   | -  | -               |
| 12     | CLASS 3     | A-3*      | CLASSROOM                                  | 89 SF    | 20 NET   | 5               |
| 14     | CLASS 4     | A-3*      | CLASSROOM                                  | 97 SF    | 20 NET   | 5               |
| 15     | CLASS 5     | A-3*      | CLASSROOM                                  | 116 SF   | 20 NET   | 6               |
| 16     | CLASS 6     | A-3*      | CLASSROOM                                  | 116 SF   | 20 NET   | 6               |
| 17     | CLASS 7     | A-3*      | CLASSROOM                                  | 112 SF   | 20 NET   | 6               |
| 18     | OFFICE      | B         | BUSINESS                                   | 132 SF   | 150 GROSS  | 1               |
| 19     | SOCIAL HALL | A-3       | ASSEMBLY W/O FIXED SEATING- STANDING SPACE | 764 SF   | 15 NET   | 51              |
| 20     | CLASS 8     | A-3*      | CLASSROOM                                  | 193 SF   | 20 NET   | 10              |
| 21     | CLASS 9     | A-3*      | CLASSROOM                                  | 183 SF   | 20 NET   | 10              |

\*1- EXCLUDED FROM OCCUPANCY CALCULATIONS PER CBC "FLOOR AREA, NET" DEFINITION- "NOT INCLUDING UNOCCUPIED ACCESSORY AREAS SUCH AS CORRIDORS, STAIRWAYS, TOILET ROOMS, MECHANICAL ROOMS, AND CLOSETS."

**PC EXHIBIT B**

**EXITING KEY**

- INDICATES NUMBER OF OCCUPANTS EXITING AT THIS LOCATION FOR VERIFICATION OF EXIT WIDTH REQUIREMENTS. (SHOWN AT POINT OF GREATEST OCCUPANT LOAD WHEN CUMULATIVE)
- DIRECTION OF EGRESS TRAVEL
- ILLUMINATED EXIT SIGNAGE
- HATCH INDICATES AREA NOT IN CONTRACT (N.I.C.)
- HATCH INDICATES MEASURED NET AREA OF ASSEMBLY USE - STANDING SPACE
- HATCH INDICATES MEASURED NET AREA OF CLASSROOM USE

**EXITING & OCCUPANT LOAD ANALYSIS**

**CRITICAL ASSUMPTIONS/ NARRATIVE FOR EGRESS ANALYSIS:**  
ALL OCCUPANT LOAD FACTORS ARE PER CBC TABLE 1004.5.

**CORRIDOR/ HALLWAY MINIMUM WIDTH REQUIRED BY CBC 1020.2:** 36" CLEAR  
**CORRIDOR/HALLWAY MINIMUM WIDTH PROVIDED:** 60" CLEAR

**SUITE (INTERIOR) OCCUPANT LOAD ANALYSIS:**

| AREA   | O.L.F.   | O.L.   |
|--|----------|--------|
| ASSEMBLY - STANDING:                                   | 1,425 SF | 15 NET |
| ASSEMBLY - CONCENTRATED:                               | 1,565 SF | 7 NET  |
| CONCENTRATED O.L. > STANDING O.L. = *CONCENTRATED O.L. |          | 224    |

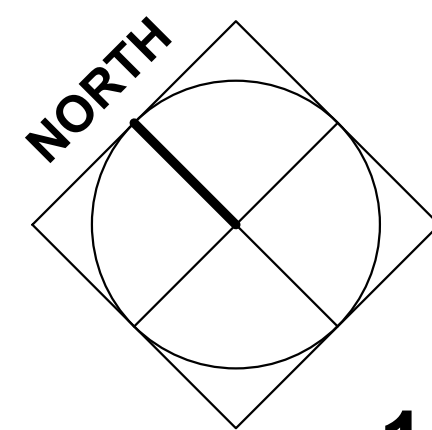
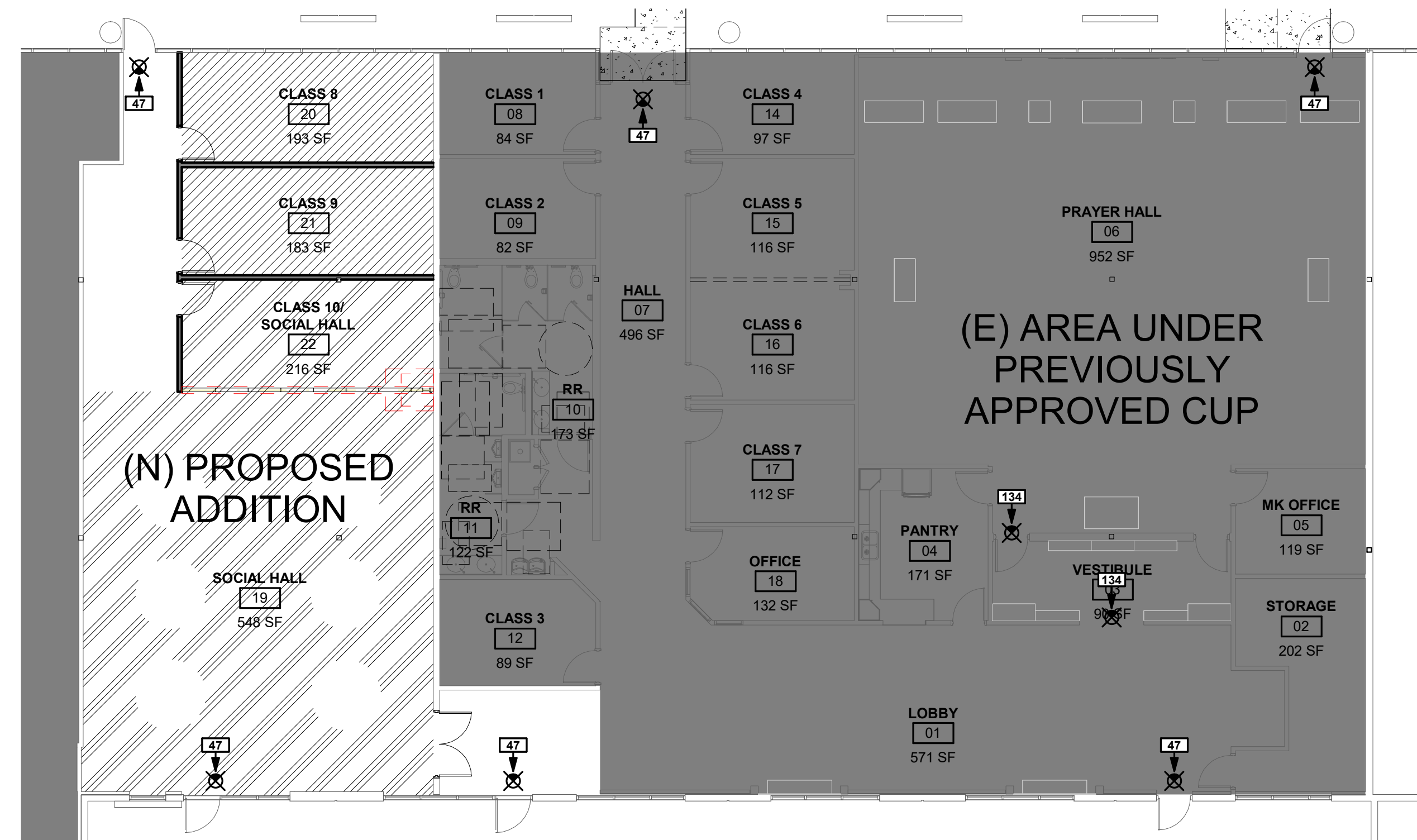
|                          |          |           |      |
|--------------------------|----------|-----------|------|
| ASSEMBLY - CONCENTRATED: | 1,565 SF | 7 NET     | 224  |
| CLASSROOM:               | 1,072 SF | 20 NET    | 54   |
| OFFICE:                  | 251 SF   | 150 GROSS | ±2   |
|                          |          |           | =280 |

TOTAL EXITS REQUIRED: 2  
TOTAL EXITS PROVIDED: 6  
**TOTAL EGRESS WIDTH REQUIRED:** 45.6" (206 OCC. x 0.2 IN. PER 1 OCC.) < 64"

**EXIT DOORS AND OTHER EGRESS COMPONENTS ANALYSIS:**  
NO SINGLE DOOR EXIT PROVIDES LESS THAN 32" CLEAR WIDTH.

**MAX. OCC. LOAD ACCOMMODATED:**  
AT SINGLE DOOR EXIT: 160 OCC. (32" / 0.2 PER OCC.)  
AT DOUBLE DOOR EXIT: 320 OCC. (64" / 0.2 PER OCC.)

\*\*ASSEMBLY - CONCENTRATED\* SPACE NOT USED CONCURRENTLY WITH \*ASSEMBLY - STANDING\* SPACE.

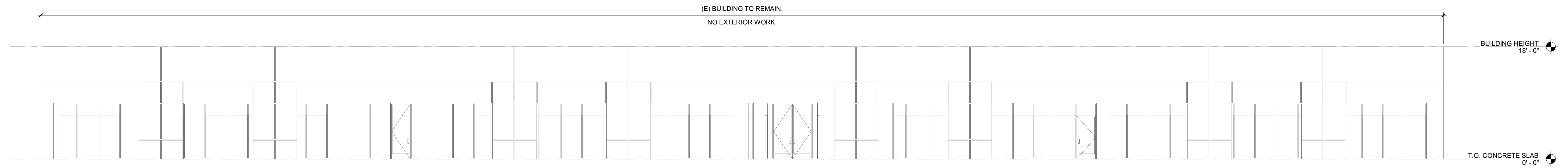


**1 FLOOR PLAN**  
SCALE: 1" = 10'-0"

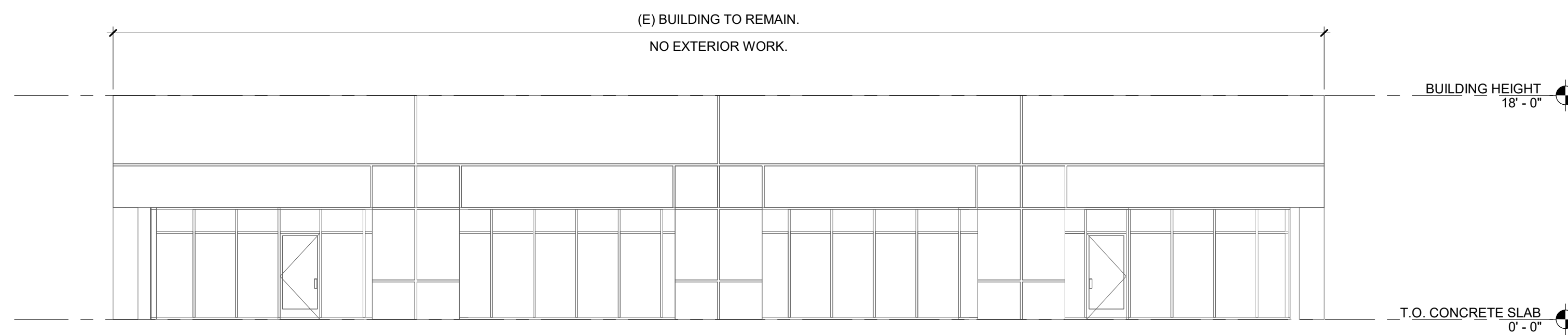
Preliminary Design For:  
**ISMALI CENTER**  
1836 SIERRA GARDENS DR, STE 90  
ROSEVILLE, CA 95661

VVM / NS 2024227 08/26/2025

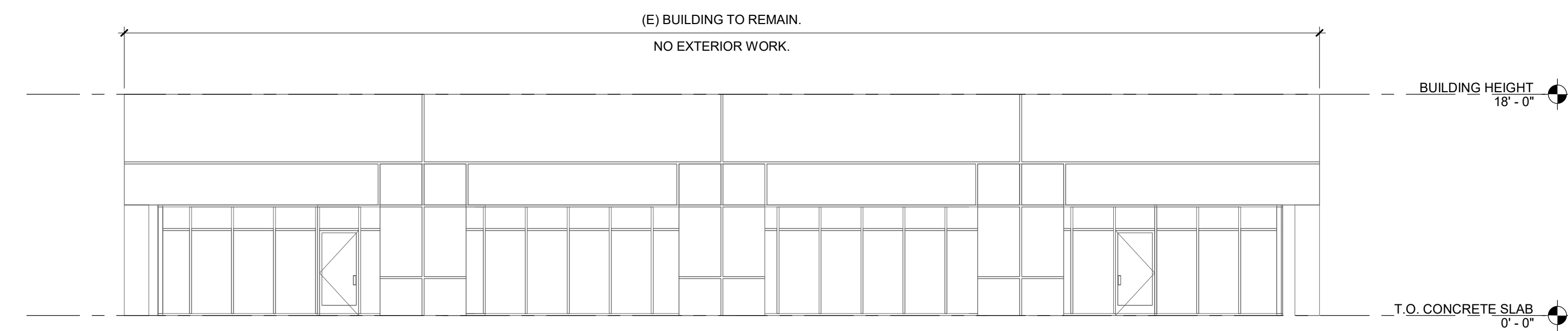




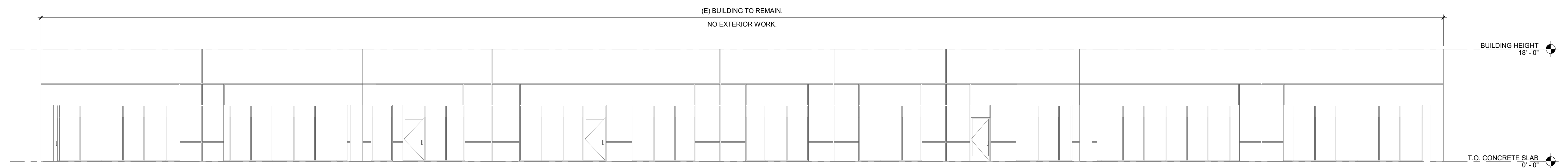
**1 NORTH**  
SCALE: 1/8" = 1'-0"



**2 WEST**  
SCALE: 1/8" = 1'-0"



**3 EAST**  
SCALE: 1/8" = 1'-0"



**4 SOUTH**  
SCALE: 1/8" = 1'-0"

Preliminary Design For:  
**ISMAILI CENTER**  
1836 SIERRA GARDENS DR, STE 90  
ROSEVILLE, CA 95661

VVM / NS 2024227 08/26/2025

